

Service Bulletin

Subject:

Conversion of aircraft from FAA certificated FAR23 Amendment 54 status to CASA certificated FAR23 Amendment 54 status.

Applicability:

All GA8 aircraft serial numbers that have incorporated Service Bulletin SB-GA8-2003-05.

Amendments:

Nil – Initial Issue

Background:

This Service Bulletin provides information regarding the modifications required to convert a GA8 from FAA certificated FAR23 Amendment 54 status to CASA certificated FAR23 Amendment 54 status.

Compliance:

This Service Bulletin is optional, however, it is a pre-requisite for aircraft exported from countries recognising an FAA type certificate to those that recognise a CASA type certificate.

Weight and Balance:

Negligible effect on weight and balance.

Approval:

This Service Bulletin has been approved pursuant to Regulation 35 of CAR1988.

Parts:

Item	P/N	Description	Qty
1	GA8-112011-163	Left throttle quadrant placard	1
2	GA8-112011-165	Right throttle quadrant placard	1
3	GA8-761021-63	Propeller gate	1
4	GA8-761011-17	Nutplate assembly	1
5	Piper S1022Z6-8	Screw	2
6	GA8-771013-11*	Tachometer	1
7	C01-01-03	CASA Approved Flight Manual	1
8	C01-00-03	CASA Approved Service Manual	1

* Existing tachometer may be reworked – refer to text for details

Parts Availability:

New parts can be obtained directly from Gippsland Aeronautics.

Tel.: +61 03 5172 1200

Fax.: +61 03 5172 1201

Email: spares@gippsaero.com

Instructions:

Propeller Gate Installation

1. Remove existing throttle quadrant placards.
2. Install new throttle quadrant placards (P/N GA8-112011-163 and GA8-112011-165).
3. Install propeller gate (P/N GA8-761021-63) and nutplate assembly (P/N GA8-761011-17). Refer to Figure 1.

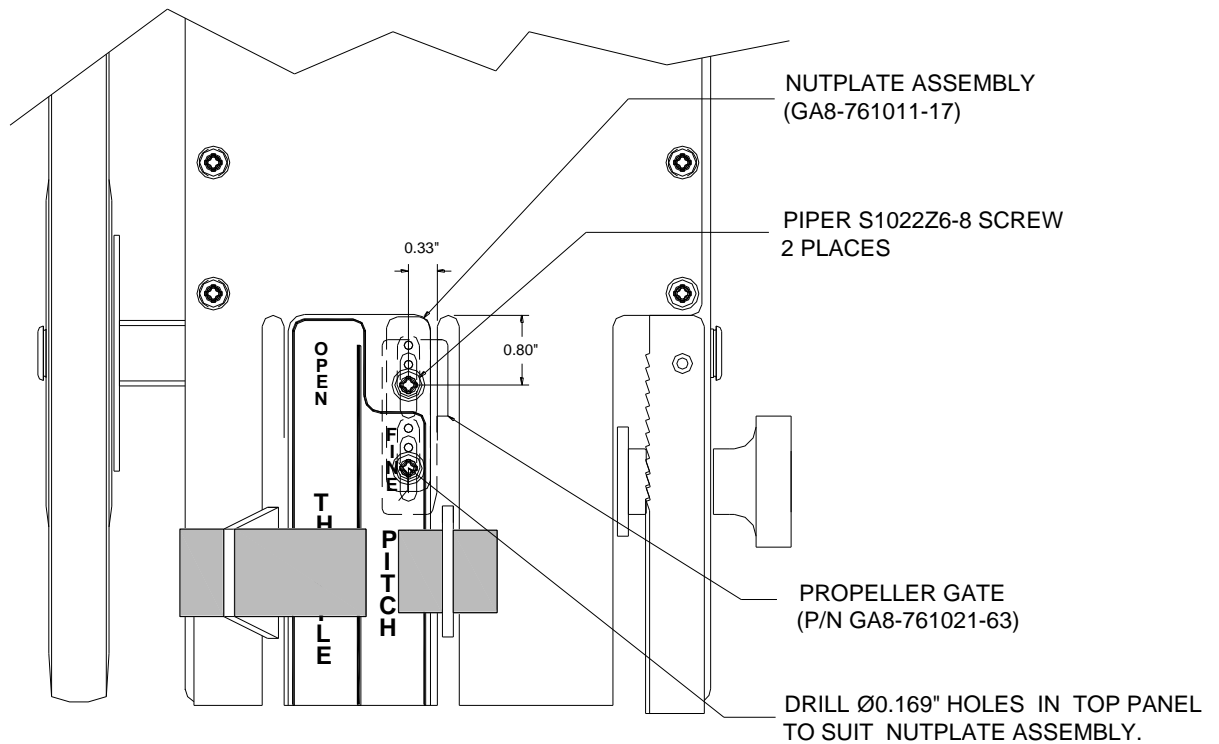


Figure 1 – Gate installation

4. To set take-off rpm:
 - (i) loosen propeller gate attaching screws.
 - (ii) start engine and allow to warm up.
 - (iii) cycle propeller control several times to ensure that warm oil has circulated through the propeller.
 - (iv) retard propeller control until 2500 rpm is set on the tachometer.
 - (v) set propeller gate abutting the propeller control and tighten attach screws

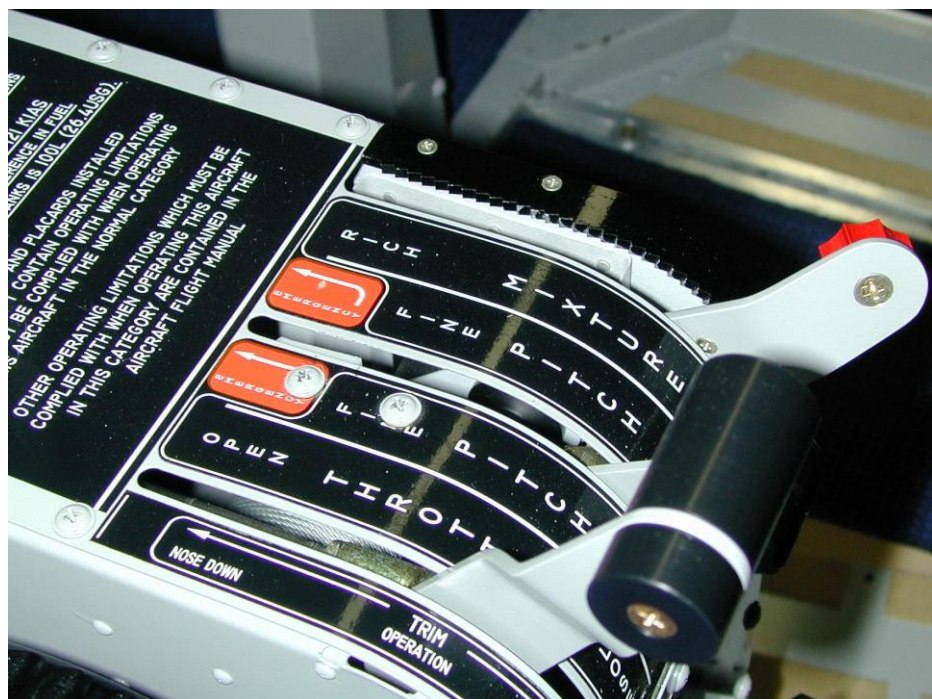


Figure 2 – Completed installation

Tachometer Replacement

1. Remove existing tachometer and replace with new tachometer (P/N GA8-771013-11)

Alternatively, the existing tachometer may be reworked by re-marking the existing yellow arc between 2500 rpm and 2700 rpm with a red arc. Refer to Figure 3. Re-identify the tachometer as GA8-771013-11.

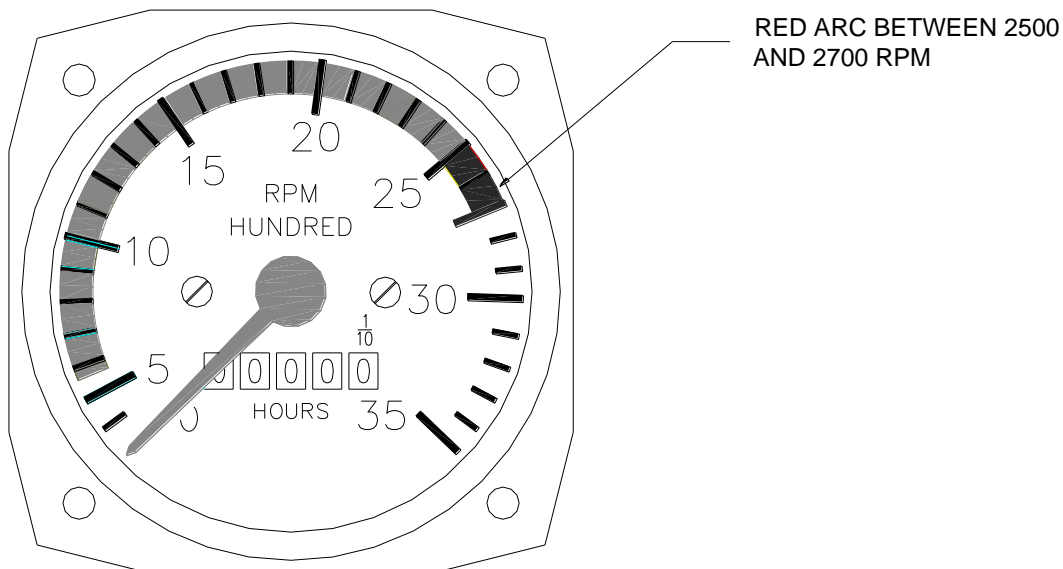


Figure 3 – Tachometer marking

Recommendations

For aircraft that are relocating from the southern hemisphere to the northern hemisphere (or vice versa), Gippsland Aeronautics recommend that the following instruments be replaced with units intended for the hemisphere of operation:

- Compass
- Directional Gyro
- Artificial Horizon

Additionally, if the aircraft is fitted with a GPS, an upgrade to the GPS database should be obtained from the GPS manufacturer or their approved agent.

Documentation:

1. Replace existing FAA approved aircraft Flight Manual C01-01-04 with CASA approved Flight Manual C01-01-03.
2. Replace existing FAA approved Service Manual C01-00-04 with CASA approved Service Manual C01-00-03.
3. Update aircraft log book to reflect incorporation of this Service Bulletin.

Compliance Notice:

Complete the Document Compliance Notice and return to Gippsland Aeronautics by fax/mail.

Aircraft Serial Number: GA8-_____

I/we have incorporated Service Bulletin SB-GA8-2003-06 for the above aircraft.

Dated: _____

Signed

Please post or fax this compliance notice to:

Gippsland Aeronautics
Attn: Technical Services
P.O. Box 881
Morwell Victoria 3840
Australia
Fax.: +61 03 5172 1201